

FEEDER MANAGEMENT



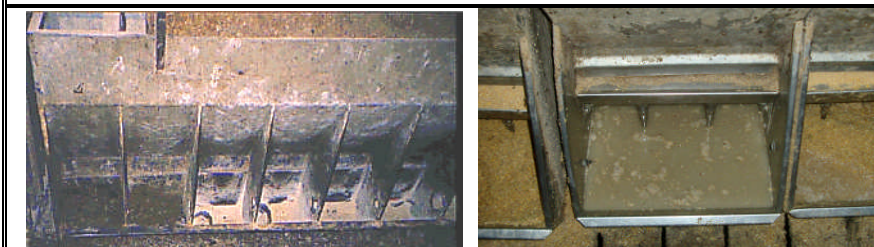
Inadequate flow.
Look for clean and shiny feeders



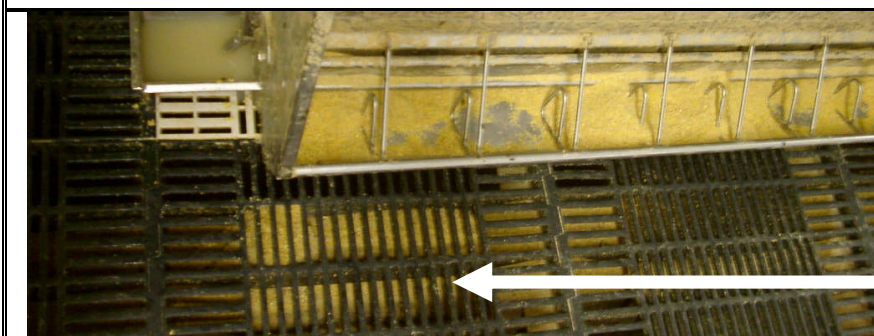
Adequate flow
food on any ledge
and no more than
15% of trough
lightly covered
with the feed.



Excess flow
Food that is too
easy is more likely
to be wasted,
soiled or become
powder



Remember some
feeders are
variable over the
length. Examine
blocked feeders
full of water



Wasted food
Food is about 60%
of the cost of
producing pig
meat. It is vital
that no food is
wasted. Note the
feed under the
slats.