

Feeder Management – Liquid Short



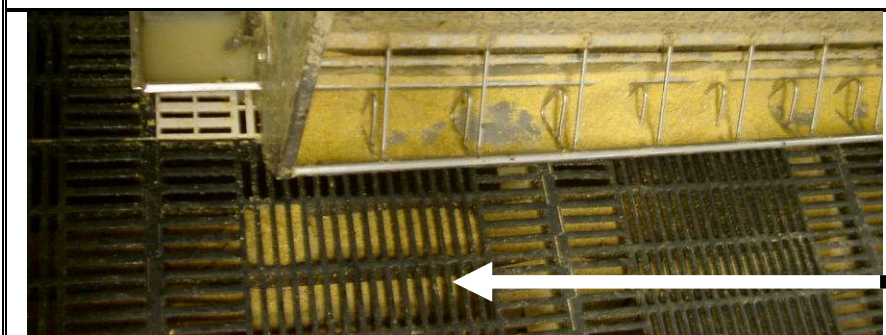
Inadequate flow.
Look for clean and shiny feeders



Adequate flow
Clean feeder with small amount of residual feed



Excess flow
Feeder still has obvious feed present 10 minutes after feed delivery



Wasted food
Food is about 60% of the cost of producing pig meat. It is vital that no food is wasted. Note the feed under the slats.