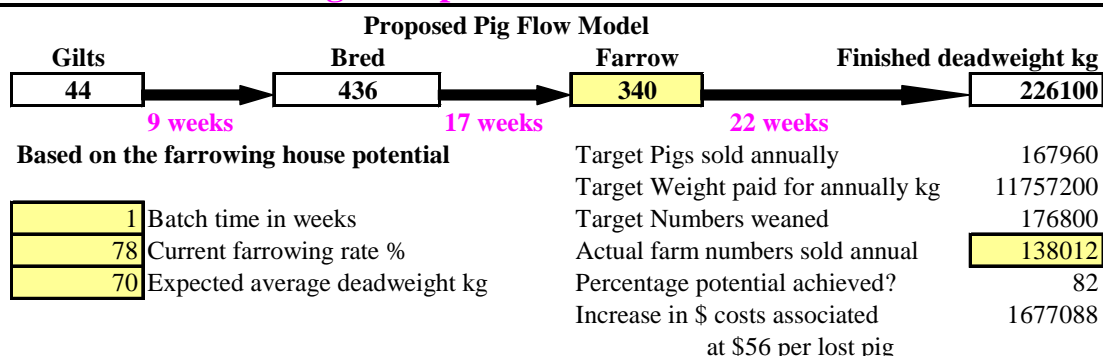


Western Australian Pig Champ Clients results for 1 May 2004 to 1 May 2005 – based on 8000 sows over 15 farms

Western Australian PigChamp Clients



With a population of 8000 sows and a target of 2.2 litters per sow per year, this would result in 338 sows per week to be mated. Therefore, a target of 340 was used to create this artificial farm pig flow model. The model provides a guide to the number of females that are required to be bred per batch (assumed to be a week – 7 days). Note that if 10 pigs were weaned per crate and a 5% post-weaning mortality was achieved, a total of 11,757,200 kg will be produced. The results from Western Australia indicate that a shortfall was achieved resulting in an increased cost of \$1,677,088 over the year.

Breeding target

Range of breedings achieved over the 40 weeks?	348 - 420	
Current farrowing rate %	78%	Breeding target based on this farrowing rate
From the 40 week Csum	Number of batches below FR% breeding target? 100%	
If the farm was model was used as a model, the farms of Western Australia fail to achieve the target breedings to achieve a 2.2 litters per sow per year target. On normal producing farms, it is not unusual to find that 40-60% of breedings per batches are insufficient to allow the farm to succeed.		

Analysis of returns

Breeding to found not in pig

Tabulate results together with the following table and reason for target failure:

Days post service	0-17	18-24	24-35	36-48	48-80	80+
% target (ideal)	0	80	20	0	0	0
Farm actual	124	587	631	311	241	1265
% farm actual	4	19	20	10	8	40

Breeding to found not in pig reasons

Recorded reason for return	Farm %	Target %
18-24 day return	32	60
Other returns	32	15
N.I.P	4	2
Abortion	3	6
Culls none reproductive	22	6
Deaths	6	6

Abortion problem? No specific abortion problem was determined by the examination of these records

The analysis of these general figures clearly demonstrate that there is a serious problem with heat detection and accurate pregnancy diagnosis. The number of pregnant sows being misdiagnosed until after day 80 of pregnancy needs urgent review. The reasons for failure to farrow also clearly shows that the farms misdiagnose failure to farrow to culls none reproductive. The records indicate that 55% of these culls occur in week 16 of 'pregnancy'. To give an estimation of the cost of this misdiagnosis of pregnancy, if each of the sows found not in pig were found are given 80 none productive sow days, each of which are worth \$5.60, the equates to \$506,000. .

Wean to breeding interval

Wean to breeding interval - days?	5.9 days
% mating 4 to 7 days post weaning?	88%

Analysis of wean to breeding interval:

Wean to breeding days	Farm	%	Target %	Comment
0-3	386	3	0	Early
4 to 7	11569	89	95	Ideal
8 to 21	589	5	0	Late or cycled in farrowing area
22-31	259	2	5	Possibly missed between initial 4-7 days
32+	147	1	0	Should consider culling

The pattern of wean to breeding interval follows expected targets. There are too few sows cycling 4-7 days post-weaning. Note the 3% of sows which are mated before day 4 post-weaning and the large number of animals which cycle between 8 and 21 days post-weaning.

Parity effects

Distribution

Parity	0	1	2	3-6	7+
Target %	17	15	14	46	8
Farm %	25	14	11	42	8

The parity profile demonstrates that too many gilts are brought onto the farms and fail to get to parity 3, when they are most productive. The conclusion is also supported by the large 71% replacement rate.

Parity	1	2	3+
Target Total born	11.5	12.5	13
Farm	10.7	11.1	12.0

2nd litter size drop? No

The parity increase in litter size follows normal patterns, with a rise of 0.4 pig from gilt to 2nd parity and an addition 0.9 pig from 2nd parity to the 3rd parity. Unfortunately, the gilt total litter size is 0.8 of the pig short of set targets and this initial expectation is never achieved in the subsequent litters.

Interactions between different events

Lactation length	0-11 days	12-17 days	18 days +
Wean to breeding	10.5	6.0	5.7
Farrowing rate %	51	66	77
Total born	10.4	11.4	11.6

The increase in lactation results in a reduction in wean to breeding interval, and increase in the farrowing rate and a slight increase in total litter size.

Wean to breed interval days	0-3 days	4-7 days	8-14 days	15 days +
Farrowing rate %	74	77	61	70
Total born	12.1	11.6	11.3	11.7

Sows that cycle within 7 days of weaning are most productive, with the expected shortfall of both farrowing rate and litter size in sows mated after day 8. The litter size reduction is smaller than expected. Note, delaying mating to after day 15 post-weaning does not dramatically improve the productivity of the sows.

Service number	Number of breedings	% of breedings	Farrowing rate %	Expected FR%	Litter size
1	16844	87	77.6	85	11.4
2	2286	12	60	75	11.3
3+	305	2	54.4	50	10.4

Mating sows which fail to hold to breeding produces generally poor results. Note that mating sows on their third cycle not only has a very low farrowing rate, the litter size is also low.

Farrowing area

Total born	Total born per crate?	11.5
	Born alive?	10.5
	Stillborn?	6.5
	Mummified?	2.0
The total born alive is one pig below targets. The stillborn rate is acceptable, however, the mummified % is higher than accepted. Note however, that the combined stillborn and mummified rates would still be within accepted targets.		

Total weaned per batch

Number weaned per crate?	9.4
Total weight weaned per pig kg	Total weight weaned per crate kg
The number weaned per crate is too low at 9.4, a target of 10 should be aimed for. The weights of the weaners were generally not recorded. If the farms were able to wean 10 per crate, over the 15397 weanings, this would account for an additional 9000 pigs, which with a fixed cost of \$56 per pig weaned, this equates to a cost of \$504,000 or \$3.50 per pig currently weaned annually.	

Lactation length comments:

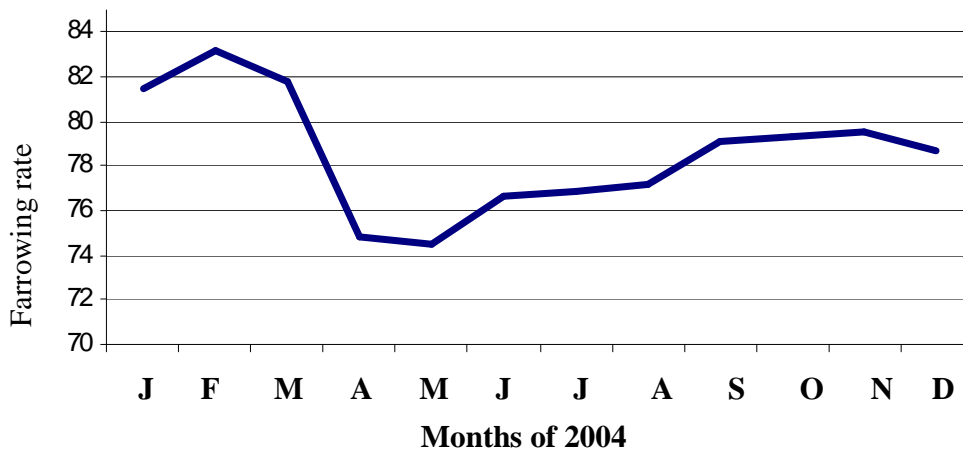
The graph indicates that majority of the farms practice either 3 or 4 week weaning, with the peak of pigs weaned at 21 days of age.

Impact of seasonal infertility

The data for 2002 to 2004 was examined to examine for the effects of seasonal infertility. The typical drop in farrowing rate associated with seasonal infertility was revealed.

	Jan	Feb	Mar	Apr	May	Jun	Jul	Aug	Sep	Oct	Nov	Dec
2002	80.0	77.2	73.5	72.2	68.9	73.0	78.1	79.4	79.3	80.4	80.8	79.1
2003	79.8	78.5	82.1	80.6	72.6	77.0	80.8	79.3	81.5	82.2	83.6	82.0
2004	81.5	83.2	81.8	74.8	74.5	76.6	76.9	77.2	79.1	79.3	79.5	78.7

This is illustrated graphically for 2004.



LAST 40 WEEKS FARROWING RATE REPORT
 (Report generated to include all weeks to have finished farrowing)

26 JUL 04 - 1 MAY 05
 FARM: AUST

PigCHAMP 4.10
 (C) 1985,87,88,91,96 Univ of Minn
 Licensed to ISU VET MED Univ.
 Printed: 2 SEP 05

SERVICE DATES	S	TARGET=0		WEEK: SOWS PRESUMED PREGNANT	F	FARROW RATE	EXPECTED FARROW DATES
		LONG/SHORT	L/S CUMUL				
26JUL04- 1AUG04	348	348	348	348 345 341 331 318 311 308 307 305 303 303 302 302 300 297 273 273	78.4	18NOV04-24NOV04	
2AUG04- 8AUG04	358	358	706	358 357 350 338 335 330 328 327 325 323 323 322 322 321 320 297 297	83.0	25NOV04- 1DEC04	
9AUG04-15AUG04	361	361	1067	361 360 343 334 332 323 321 319 317 316 315 312 312 310 310 283 283	78.4	2DEC04- 8DEC04	
16AUG04-22AUG04	378	378	1445	377 375 358 349 342 336 335 332 328 326 326 325 323 320 316 284 284	75.1	9DEC04-15DEC04	
23AUG04-29AUG04	342	342	1787	342 339 330 316 315 310 307 303 300 299 298 297 297 296 293 264 264	77.2	16DEC04-22DEC04	
30AUG04- 5SEP04	399	399	2186	399 397 388 379 373 370 365 363 357 357 357 357 355 355 351 315 315	78.9	23DEC04-29DEC04	
6SEP04-12SEP04	415	415	2601	415 415 406 385 378 373 370 368 365 365 364 363 360 360 359 333 333	80.2	30DEC04- 5JAN05	
13SEP04-19SEP04	353	353	2954	353 351 343 330 328 323 312 312 311 311 310 309 307 307 299 270 270	76.5	6JAN05-12JAN05	
20SEP04-26SEP04	365	365	3319	365 364 350 338 333 327 319 317 316 311 310 310 310 309 309 279 279	76.4	13JAN05-19JAN05	
27SEP04- 3OCT04	385	385	3704	385 384 369 353 345 341 335 333 331 331 331 329 328 326 322 294 294	76.4	20JAN05-26JAN05	
4OCT04-10OCT04	362	362	4066	362 361 354 348 346 340 336 335 332 331 329 327 327 326 323 302 302	83.4	27JAN05- 2FEB05	
11OCT04-17OCT04	351	351	4417	351 351 339 329 324 318 313 310 308 307 305 303 302 300 294 267 266	75.8	3FEB05- 9FEB05	
18OCT04-24OCT04	373	373	4790	372 370 351 332 329 322 319 318 316 314 314 312 310 310 299 270 270	72.4	10FEB05-16FEB05	
25OCT04-31OCT04	348	348	5138	340 340 331 315 307 301 298 298 297 296 296 295 294 292 291 271 271	77.9	17FEB05-23FEB05	
1NOV04- 7NOV04	408	408	5546	399 399 390 370 359 352 346 343 339 339 338 337 337 336 335 317 317	77.7	24FEB05- 2MAR05	
8NOV04-14NOV04	378	378	5924	377 375 364 344 342 330 326 323 320 318 316 316 316 314 313 283 283	74.9	3MAR05- 9MAR05	
15NOV04-21NOV04	382	382	6306	379 377 365 340 336 325 320 317 317 315 315 313 312 311 307 275 275	72.0	10MAR05-16MAR05	
22NOV04-28NOV04	383	383	6689	382 380 371 350 345 340 337 335 333 331 330 330 329 326 323 301 300	78.3	17MAR05-23MAR05	
29NOV04- 5DEC04	381	381	7070	381 380 371 349 342 327 320 318 316 315 315 312 311 311 308 281 279	73.2	24MAR05-30MAR05	
6DEC04-12DEC04	384	384	7454	383 381 376 352 333 325 318 314 313 313 312 312 309 308 306 285 285	74.2	31MAR05- 6APR05	
13DEC04-19DEC04	366	366	7820	366 365 356 338 328 319 315 313 310 308 308 308 306 304 302 272 272	74.3	7APR05-13APR05	
20DEC04-26DEC04	352	352	8172	352 351 347 325 316 313 306 302 298 297 295 294 294 293 293 272 272	77.3	14APR05-20APR05	
27DEC04- 2JAN05	392	392	8564	392 389 383 362 358 354 347 343 339 337 332 331 331 330 330 293 292	74.5	21APR05-27APR05	
3JAN05- 9JAN05	360	360	8924	360 360 349 341 332 327 320 318 316 314 313 310 309 306 305 286 286	79.4	28APR05- 4MAY05	
10JAN05-16JAN05	359	359	9283	358 355 343 333 329 322 312 308 308 306 303 302 301 297 292 265 261	72.7	5MAY05-11MAY05	

GENERAL PERFORMANCE MONITOR

1 MAY 04 - 30 APR 05
FARM: AUST

PigCHAMP 4.10
(C) 1985,87,88,91,96 Univ of Minn
Licensed to ISU VET MED Univ.
Printed: 2 SEP 05

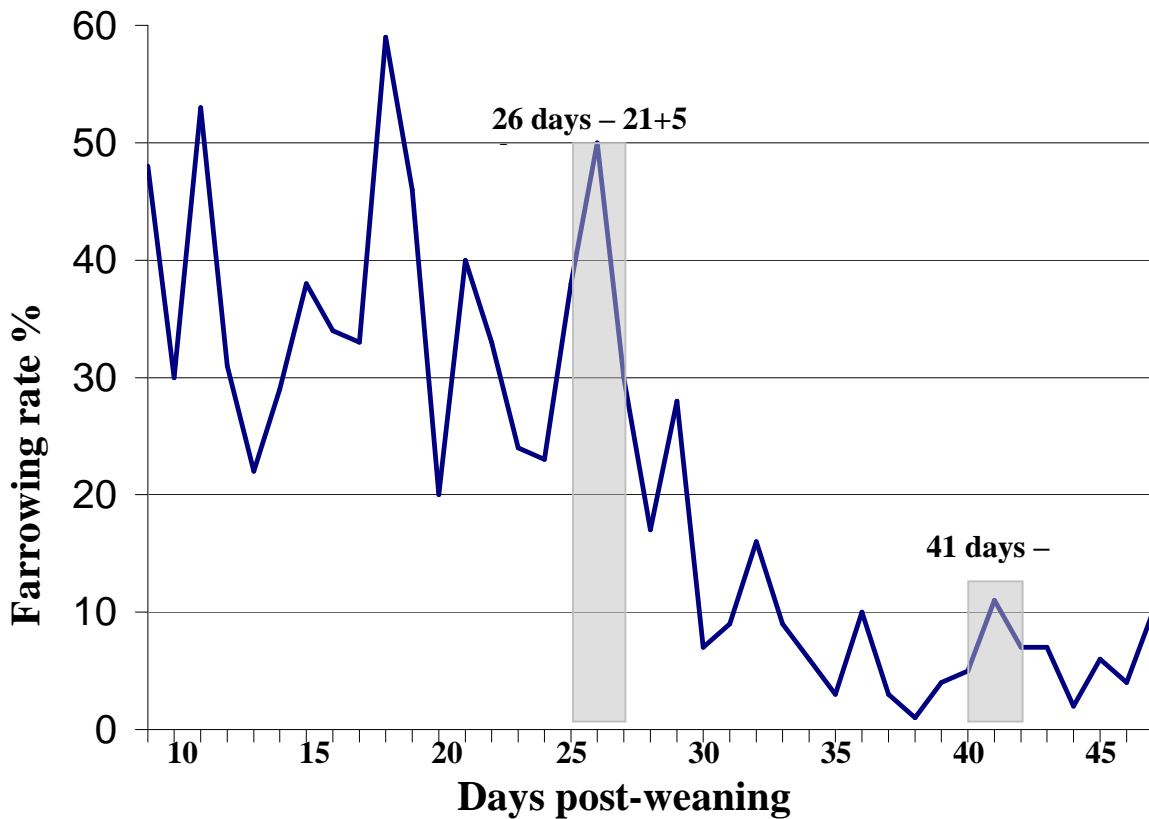
	MAY 04 JUL 04	AUG 04 OCT 04	NOV 04 JAN 05	FEB 05 APR 05	MAY 04 APR 05
BREEDING PERFORMANCE					
Total number of services	4757	4815	5020	4862	19454
Percent repeat services	13.4	11.2	13.1	15.5	13.3
Percent multiple matings	93.7	96.7	97.5	97.7	96.4
Weaning - 1st service interval	6.0	5.9	5.8	6.1	5.9 Good
Percent sows bred by 7 days	85.2	87.1	92.4	89.4	88.6
Entry - 1st service interval	40.3	23.2	39.0	44.5	36.7
FARROWING PERFORMANCE					
Number of sows farrowed	3593	3929	4036	3968	15526
Ave parity of farrowed sows	3.6	3.6	3.8	3.9	3.7
Average total pigs per litter	11.5	11.5	11.6	11.3	11.5 ↓↓
Average pigs born alive/litter	10.5	10.6	10.6	10.4	10.5 ↓↓
Ave birth wt / liveborn pig	1.3	0.0	0.0	0.0	1.3
Percent stillborn pigs	6.4	6.3	6.5	6.6	6.5
Percent mummies	1.9	1.9	2.0	2.1	2.0 ↑
Farrowing rate	76.0	78.5	79.4	77.1	77.8 ↓
Adj. farrowing rate	80.6	86.5	85.9	83.1	84.0
Farrowing interval	147	148	146	145	147
Litters / mated female / year	2.27	2.24	2.24	2.17	2.23
Litters / crate / year	0.0	0.0	0.0	0.0	0.0
WEANING PERFORMANCE					
Number of litters weaned	3517	3883	3988	4009	15397
Total pigs weaned	32934	36459	38366	37517	145276
Pigs weaned per sow	9.3	9.4	9.6	9.4	9.4 ↓↓
Pre-weaning mortality	10.1	10.8	9.4	9.6	10.0
Average piglet weaning weight	6.9	6.7	6.7	6.6	6.7
Average age at weaning	21.6	20.8	20.1	19.9	20.6
Adjusted 21 day litter weight	66	66	69	66	67
Pigs wnd / mated female / yr	21.3	21.1	21.4	20.4	21.1
Pigs weaned / crate / year	0.0	0.0	0.0	0.0	0.0
Pigs weaned / lifetime female	30	36	32	31	32
POPULATION					
Ending female inventory	6905	7056	7127	7298	7298
Average parity	2.7	2.7	2.8	2.9	2.9
Average female inventory	6873.5	6968.9	7212.6	7249.7	7074.7
AFI / Crate
Average gilt pool inventory	323.6	289.0	498.4	482.5	397.7
Gilts entered	818	1008	1020	942	3788
Sows and gilts culled	623	863	834	830	3150
Sow and gilt deaths	117	127	152	171	567
Ending boar inventory	251	249	213	229	229
Sow - Boar Ratio	27.5	28.3	33.5	31.9	31.9
Replacement rate	59.5	75.8	71.1	78.3	71.2 ↑
Culling rate	36.0	49.1	45.9	47.0	44.5
Death rate	6.8	7.2	8.4	9.7	8.0 ↑
Ave non-productive sow days	71.8	71.3	80.8	87.4	77.9
Ave NPD / parity record	26.9	23.8	27.6	28.9	26.8

83	6	0.2	³ÛÛ
84	8	0.3	³ÛÛÛ
88	2	0.1	³Û
89	7	0.3	³ÛÛ
90	6	0.2	³ÛÛ
91	12	0.4	³ÛÛÛÛ
92	9	0.3	³ÛÛÛ
94	8	0.3	³ÛÛÛ
99	18	0.7	³ÛÛÛÛÛÛ
101	11	0.4	³ÛÛÛ
107	91	3.3	³ÛÛ
108	86	3.1	³ÛÛ
109	42	1.5	³ÛÛ
110	26	1.0	³ÛÛ
111	51	1.9	³ÛÛ
112	50	1.8	³ÛÛ
113	55	2.0	³ÛÛ
114	49	1.8	³ÛÛ
115	56	2.0	³ÛÛ
116	26	1.0	³ÛÛ
118	19	0.7	³ÛÛ
120	12	0.4	³ÛÛ
121	28	1.0	³ÛÛ
122	24	0.9	³ÛÛ
123	20	0.7	³ÛÛ
125	10	0.4	³ÛÛ
126	22	0.8	³ÛÛ
128	21	0.8	³ÛÛ
131	6	0.2	³ÛÛÛ
133	10	0.4	³ÛÛÛÛ
136	12	0.4	³ÛÛÛÛÛ
146	5	0.2	³ÛÛÛ
147	4	0.1	³ÛÛÛ
159	1	0.0	³
190	1	0.0	³
206	1	0.0	³
268	1	0.0	³

LIST OVERFLOW: MORE THAN MAXIMUM OF 100 LEVELS

69	1	0.0	3
70	1	0.0	3
71	2	0.0	3
72	1	0.0	3
74	1	0.0	3
76	1	0.0	3
82	1	0.0	3
85	1	0.0	3
100	1	0.0	3
126	1	0.0	3
129	1	0.0	3
151	1	0.0	3
TOTAL	12950	100.0	

The interval from 8 days to 47 days post-weaning are expanded. Note the rise in number of sows which were detected at 26 and again 41 days post-weaning which are possibly associated with sows which were initially missed between 4-7 days post-weaning and then had a normal cycle every 21 days later. The rise in cycling sows at day 18 post-weaning may be associated with animals who cycled at the end of lactation, prior to weaning. This may occur associated with partial weaning or poor lactation performance.



PARITY DISTRIBUTION REPORT

2 MAY 04 - 1 MAY 05
FARM: AUST

PigCHAMP 4.10
(C) 1985,87,88,91,96 Univ of Minn
Licensed to ISU VET MED Univ.
Printed: 2 SEP 05

	0	1	PARITY 2	3 - 6	7+	ENTIRE HERD
	-----	-----	-----	-----	-----	-----
BREEDING PERFORMANCE						
Total number of services	4151	2866	2886	7982	1565	19450
Percent of services	21.3	14.7	14.8	41.0	8.0	100.0
Percent repeat services	18.9	14.9	12.8	10.4	11.1	13.3
Percent multiple matings	90.5	95.5	98.5	98.4	99.5	96.4
Weaning - 1st service interval	.	7.0 ↑	5.7	5.8	5.4	5.9
Percent sows bred by 7 days	.	83.3	82.2	91.3	95.0	88.6
FARROWING PERFORMANCE						
Number of sows farrowed	0	3184	2445	7815	2089	15533
Percent of farrowings	.	20.5	15.7	50.3	13.4	100.0
Total pigs born alive	.	31739	25454	85428	20644	163265
Average total pigs per litter	.	10.7 ↓	11.1	12.0	11.2	11.5
Average pigs born alive/litter	.	10.0	10.4	10.9	9.9	10.5
Average stillborn pigs	.	0.5	0.5	0.8	1.1	0.7
Percent stillborn pigs	.	5.0	4.9	6.6	9.6	6.5
Average mummies per litter	.	0.2	0.2	0.3	0.2	0.2
Percent mummies	.	1.6	1.8	2.1	2.1	2.0
Litters less than 7 born live	.	357	257	607	274	1495
Percent < 7 born live	.	11.2	10.5	7.8	13.1	9.6
Average litter birth weight	.	12.2	.	14.1	14.3	13.5
Farrowing rate	.	73.4	79.0	79.9	76.0	77.8 ↓
Adj. farrowing rate	.	77.5	83.5	86.5	86.4	84.0
Farrowing interval	.	.	152	146	144	147
WEANING PERFORMANCE						
Number of litters weaned	4	3135	2466	7751	2041	15397
Percent of weanings	0.0	20.4	16.0	50.3	13.3	100.0
Total pigs weaned	38	28287	23599	74465	18887	145276
Pigs weaned per sow	19.0	9.0	9.6	9.6	9.2	9.4 ↓↓
Pre-weaning mortality	0.0	10.7	8.7	11.0	6.3	10.0
Net foster	38	234	183	-730	-91	-366
Average litter weaning weight	.	61.3	66.6	65.1	63.5	64.4
Average age at weaning	.	21.7	20.5	20.3	20.0	20.6
POPULATION						
Ending female inventory	1826	997	804	3078	602	7307
Percent of female inventory	25.0	13.6	11.0	42.1	8.2	100.0
Females entered	3780	235	396	534	84	5029
Sows and gilts culled	394	316	338	1252	851	3151
Sow and gilt deaths	83	108	92	225	59	567
Average female inventory	1598.5	1128.5	1114.7	2846.7	568.7	7076.0
Percent of average inventory	22.6	15.9	15.8	40.2	8.0	100.0
Ave non-productive sow days	143.0	73.5	69.3	64.3	79.8	77.9
Ave NPD / parity record	60.5	24.2	27.2	21.9	20.9	26.8

MATINGS / SERVICE REPORT
 1 MAY 04 - 30 APR 05
 FARM: AUST

PigCHAMP 4.10
 (C) 1985,87,88,91,96 Univ of Minn
 Licensed to ISU VET MED Univ.
 Printed: 2 SEP 05

TOTAL	ONE MATING	TWO MATINGS	THREE OR MORE
Number of services	704	10554	8177
Known service results	695	10069	7739
Returned to service	135	1771	912
Repeat service rate (%)	19.4	17.6	11.8
Number farrowed	488	7202	6223
Conception rate	78.3	79.0	85.6
Farrowing rate (%)	70.2	71.5	80.4
Adj. farrowing rate	75.3	77.7	83.8
Ave. total born	10.7	11.3	11.4

The lift in the response to 3 or more breedings is because these breedings are with more productive sows/gilts - it is not a true reflection of actual reproductive efficiency. Likewise the farrowing rate is a production of the selection of animals.

MATINGS / SERVICE REPORT
 1 MAY 04 - 30 APR 05
 FARM: AUST
 Page: 2

PigCHAMP 4.10
 (C) 1985,87,88,91,96 Univ of Minn
 Licensed to ISU VET MED Univ.
 Printed: 2 SEP 05

TOTAL	ONE SERVICE	TWO SERVICES	THREE OR MORE
Number of services	16844	2286	305
Known service results	16057	2165	281
Returned to service	2366	406	46
Repeat service rate (%)	14.7	18.8	16.4
Number farrowed	12460	1300	153
Conception rate	83.2	72.7	70.1
Farrowing rate (%)	77.6	60.0	54.4
Adj. farrowing rate	81.3	72.3	72.2
Ave. total born	11.4	11.3	10.4

Sows selected for the breeding performance report were served in the report period.

All rate calculations are based on records where the service results are known. Sows with services as last events are not included in the denominator.

19 sow(s); were served in the report period but were excluded from the report because they were transferred out of the herd before farrowing.

Lactation length results

Filter :

FARROWDATE>1 MAY 04 AND FARROWDATE<1 MAY 05

Lactation length

	COUNT	REL FREQ	
AAAAAAAAAA	AAAAAAA	AAAAAAA	
0	53	0.3	³Ü
1	36	0.2	³Ü
2	23	0.1	³
3	23	0.1	³
4	21	0.1	³
5	15	0.1	³
6	25	0.2	³
7	24	0.2	³
8	26	0.2	³
9	39	0.3	³Ü
10	13	0.1	³
11	37	0.2	³Ü
12	60	0.4	³Ü
13	96	0.6	³ÜÜ
14	388	2.5	³ÜÜÜÜÜÜÜ
15	972	6.3	³ÜÜÜÜÜÜÜÜÜÜÜÜÜÜÜÜ
16	754	4.9	³ÜÜÜÜÜÜÜÜÜÜÜÜÜÜ
17	790	5.1	³ÜÜÜÜÜÜÜÜÜÜÜÜÜÜ
18	1237	8.0	³ÜÜÜÜÜÜÜÜÜÜÜÜÜÜÜÜ
19	1420	9.2	³ÜÜÜÜÜÜÜÜÜÜÜÜÜÜÜÜ
20	1674	10.8	³ÜÜÜÜÜÜÜÜÜÜÜÜÜÜÜÜ
21	2172	14.0	³ÜÜÜÜÜÜÜÜÜÜÜÜÜÜÜÜÜÜÜÜÜÜÜÜÜÜÜÜÜÜÜÜÜÜ
22	1723	11.1	³ÜÜÜÜÜÜÜÜÜÜÜÜÜÜÜÜÜÜÜÜÜÜÜÜÜÜÜÜÜÜÜÜÜÜ
23	696	4.5	³ÜÜÜÜÜÜÜÜÜÜÜÜÜÜ
24	526	3.4	³ÜÜÜÜÜÜÜÜÜÜÜÜÜÜ
25	465	3.0	³ÜÜÜÜÜÜÜÜÜÜÜÜÜÜ
26	462	3.0	³ÜÜÜÜÜÜÜÜÜÜÜÜÜÜ
27	631	4.1	³ÜÜÜÜÜÜÜÜÜÜÜÜÜÜ
28	445	2.9	³ÜÜÜÜÜÜÜÜÜÜÜÜÜÜ
29	187	1.2	³ÜÜÜ
30	123	0.8	³ÜÜ
31	53	0.3	³Ü
32	30	0.2	³Ü
33	27	0.2	³
34	27	0.2	³
35	28	0.2	³Ü
36	23	0.1	³
37	14	0.1	³
38	9	0.1	³
39	9	0.1	³
40	17	0.1	³
41	8	0.1	³
42	10	0.1	³
43	10	0.1	³
44	4	0.0	³
45	5	0.0	³
46	7	0.0	³
47	10	0.1	³
48	13	0.1	³
49	6	0.0	³
50	3	0.0	³
51	11	0.1	³
52	3	0.0	³
53	2	0.0	³
54	4	0.0	³
56	2	0.0	³
57	1	0.0	³
72	1	0.0	³
82	1	0.0	³
TOTAL	15494	100.0	