



Pigs – who are we?

Dr Kim Nairn
Portec Australia
Murdoch University
www.portec.com.au

The artiodactyla – even toes

- Pigs
- But also Cattle and Camels
- But also related to the whales
Ambulocetus



One of the early pigs

- Entelodont

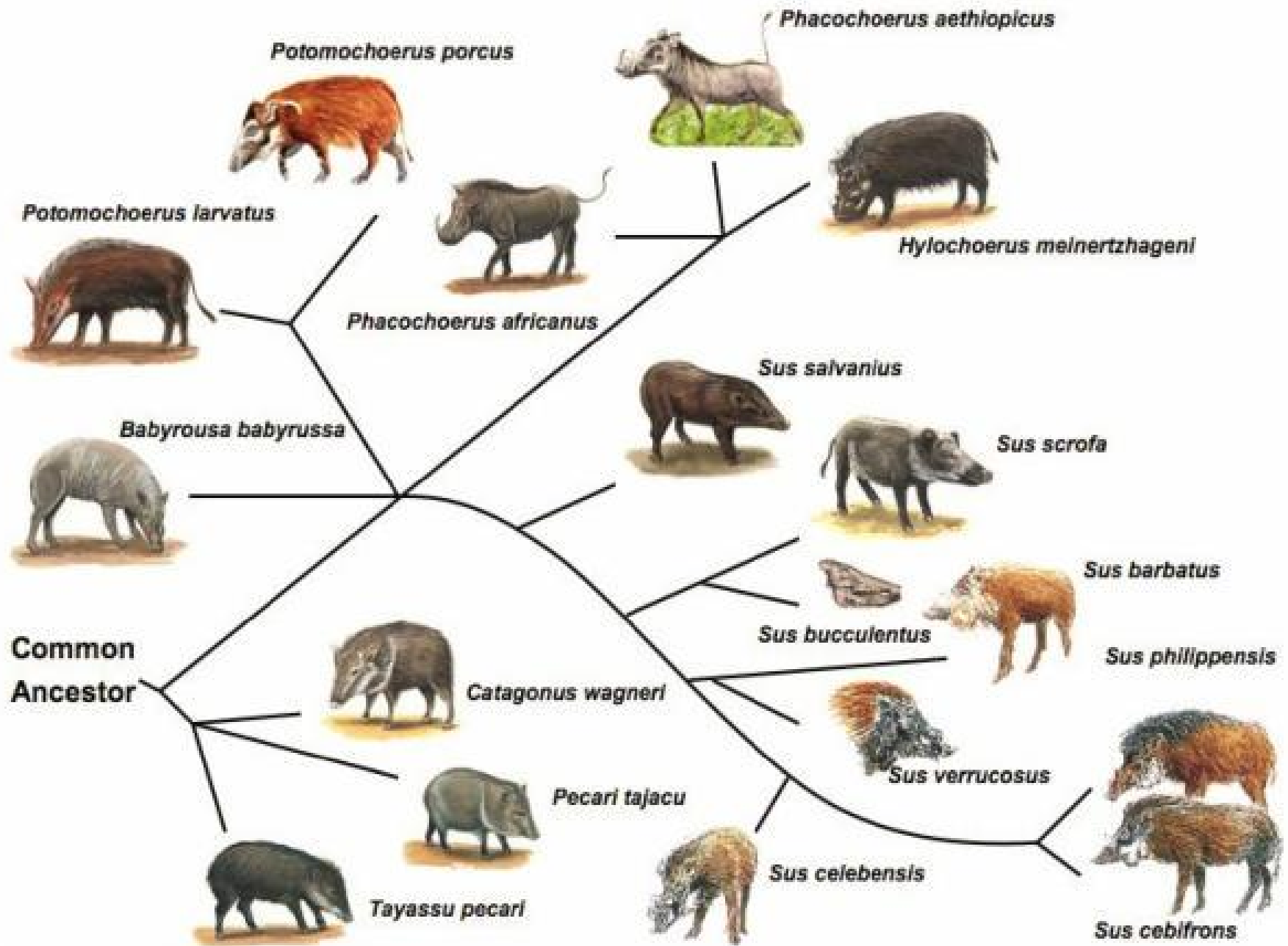


Today's suina - suborder

- Hippopotamidae
- Tayassuidae
- Suidae







<http://www.portec.com.au/thepig/basics/otherpigs/piggeneral1.htm>

Sus scrofa – The domestic pig



While pigs were domesticated 9000 years ago – there are over 700 breeds of pigs, modern western breeds are modern – less than 200 years

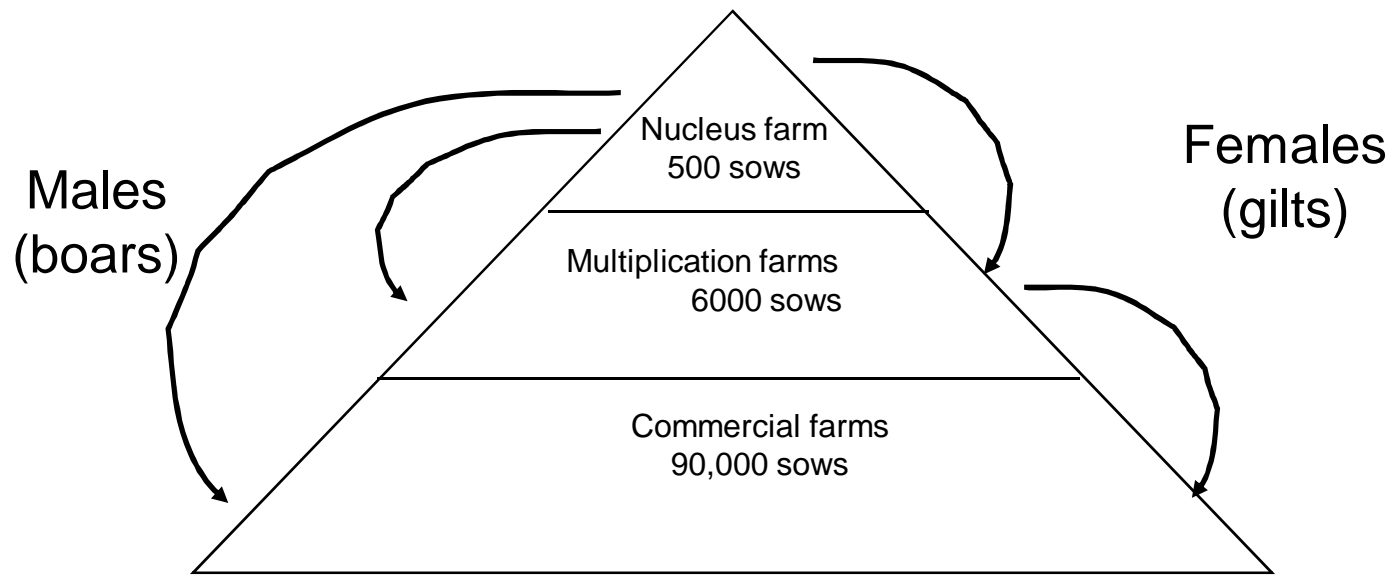




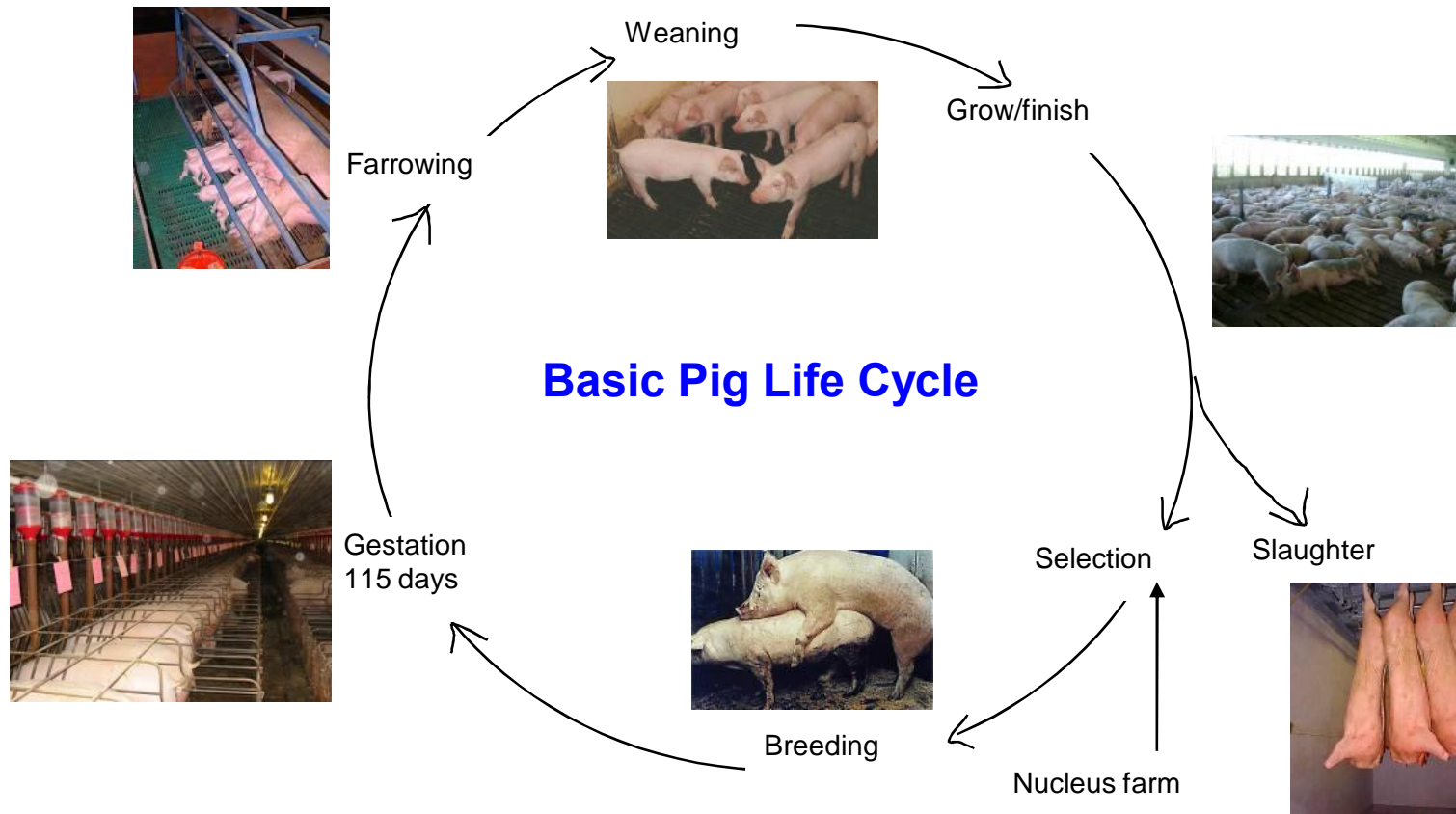
What are pigs used for?

- Meat – 40% of the meat consumption
- Skin and leather products
- Pharmaceutical products – blood and valves for example
- Pleasure and company – pet pigs

How is the industry structured?



How is the farm designed



Country	Millions of pigs
China	460
India	17
Indonesia	6
Korea North	3
Korea South	9
Malaysia	2
Myanmar	4
New Zealand	0.4
Philippines	12
Taiwan	7
Thailand	7
Viet Nam	22

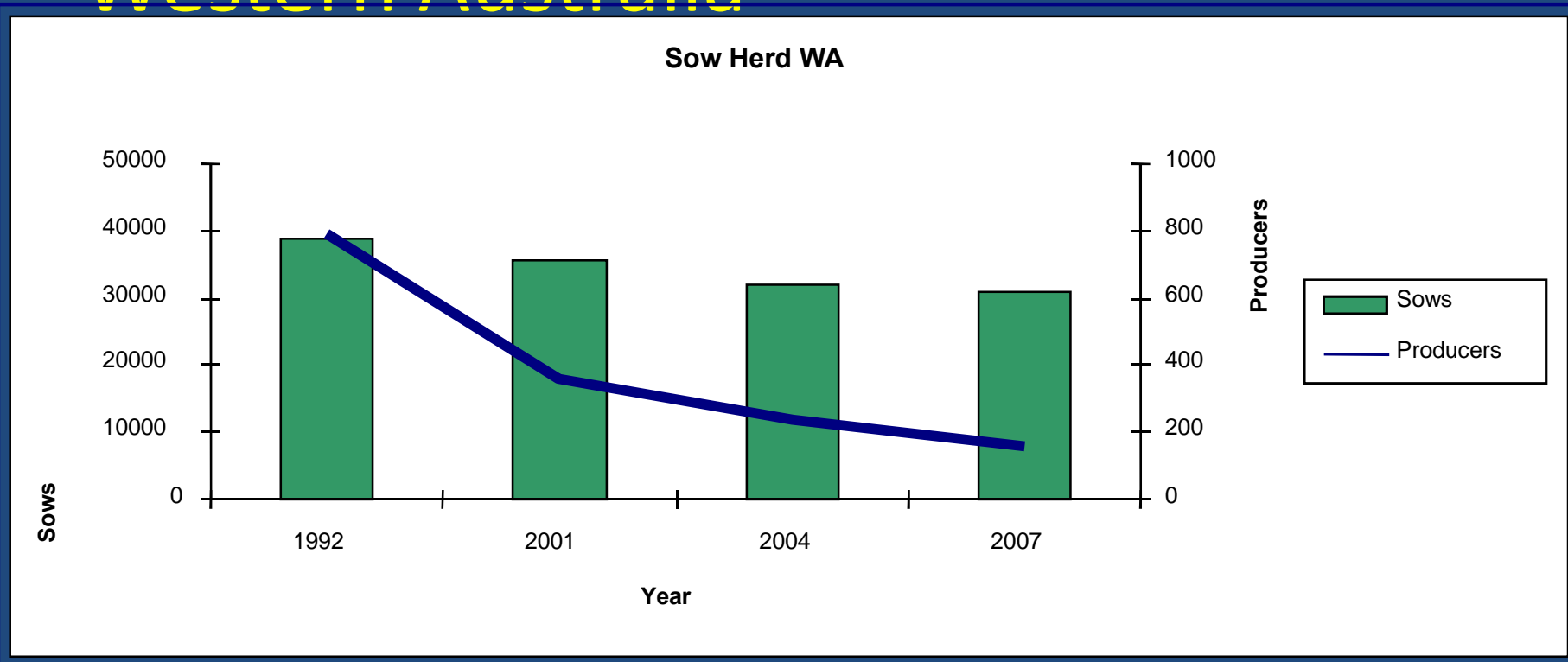
And

**Pork is 62% of the
meat eaten in China**

State	Percentage
NSW	30
Queensland	21
Victoria	19
South Australia	17
Western Australia	12

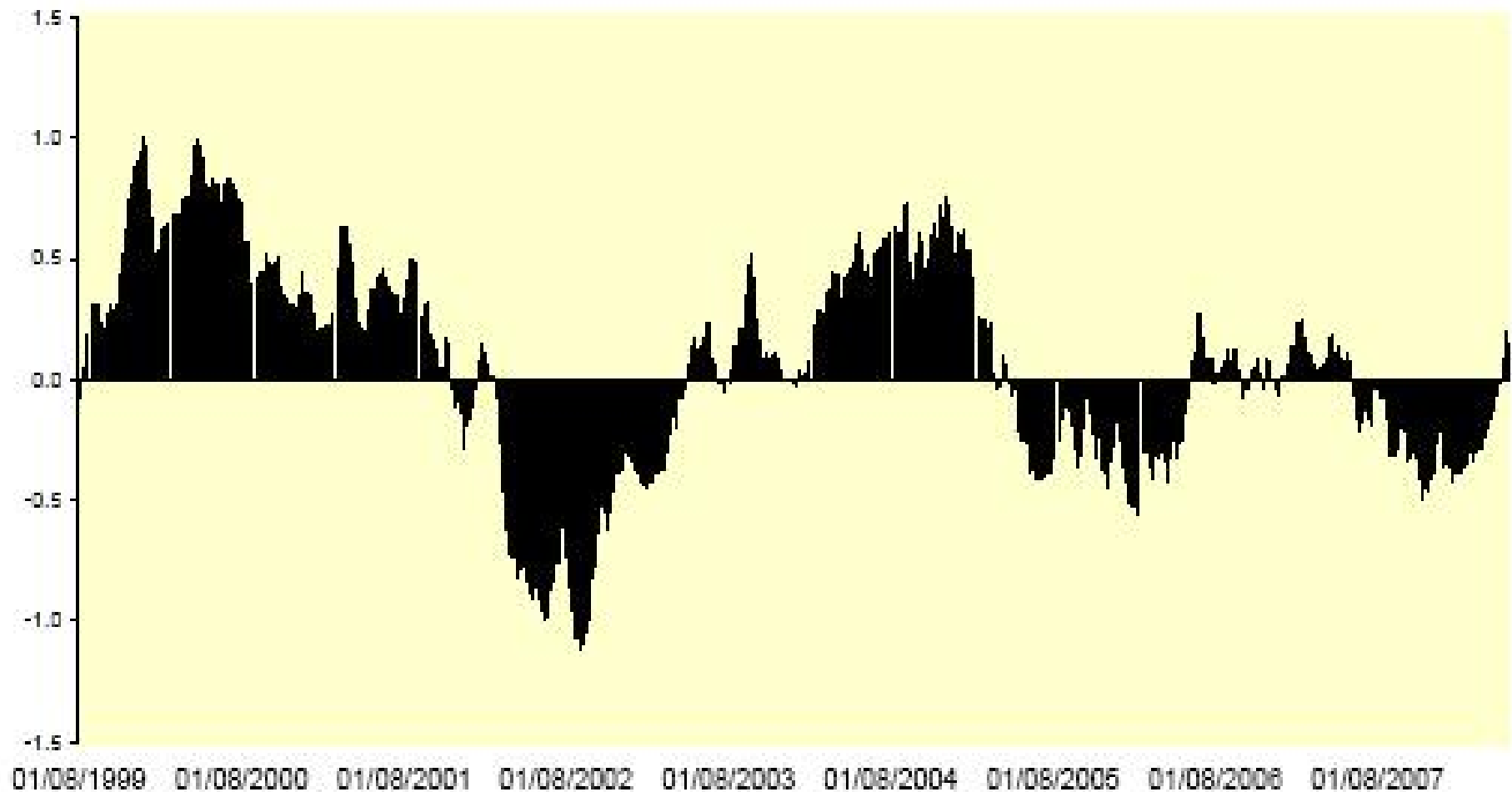


Western Australia



- 30,000 SOWS.
- Major foreign market Singapore

The pig cycle



Our impact on our planet

Food	kg CO₂-e/kg (20 years)	kg CO₂-e/kg (100 years)
Beef	111.1	55.5
Sheep meat and wool	96.3	32.7
Pig meat	10.5	3.5
Rice	2.4	0.74
Poultry	1.3	0.38
Wheat	0.35	0.32

Web resource

- <http://www.portec.com.au>